



MAHONEY INCLUSIVE PLAYGROUND

DONATION AND TRIBUTE OPPORTUNITIES



More information can be found at lincolnparks.org or contact director@lincolnparks.org



LINCOLN PARKS
FOUNDATION

We love our parks.

DONOR RECOGNITION LEVELS

Visionaries
\$100,000+

*Support the endowment or provide
naming of inclusive playgrounds per the
Outdoor Inclusive Play Strategic Plan*

Founders
\$50,000

*Support large amenity naming such as the
shelter, restrooms, or a large Play Zone*

Champions
\$25,000

Support a small Play Zone

Partners
\$10,000-15,000

*Support small scale amenities such as a
drinking fountain or a joint contribution
for a smaller Play Zone*

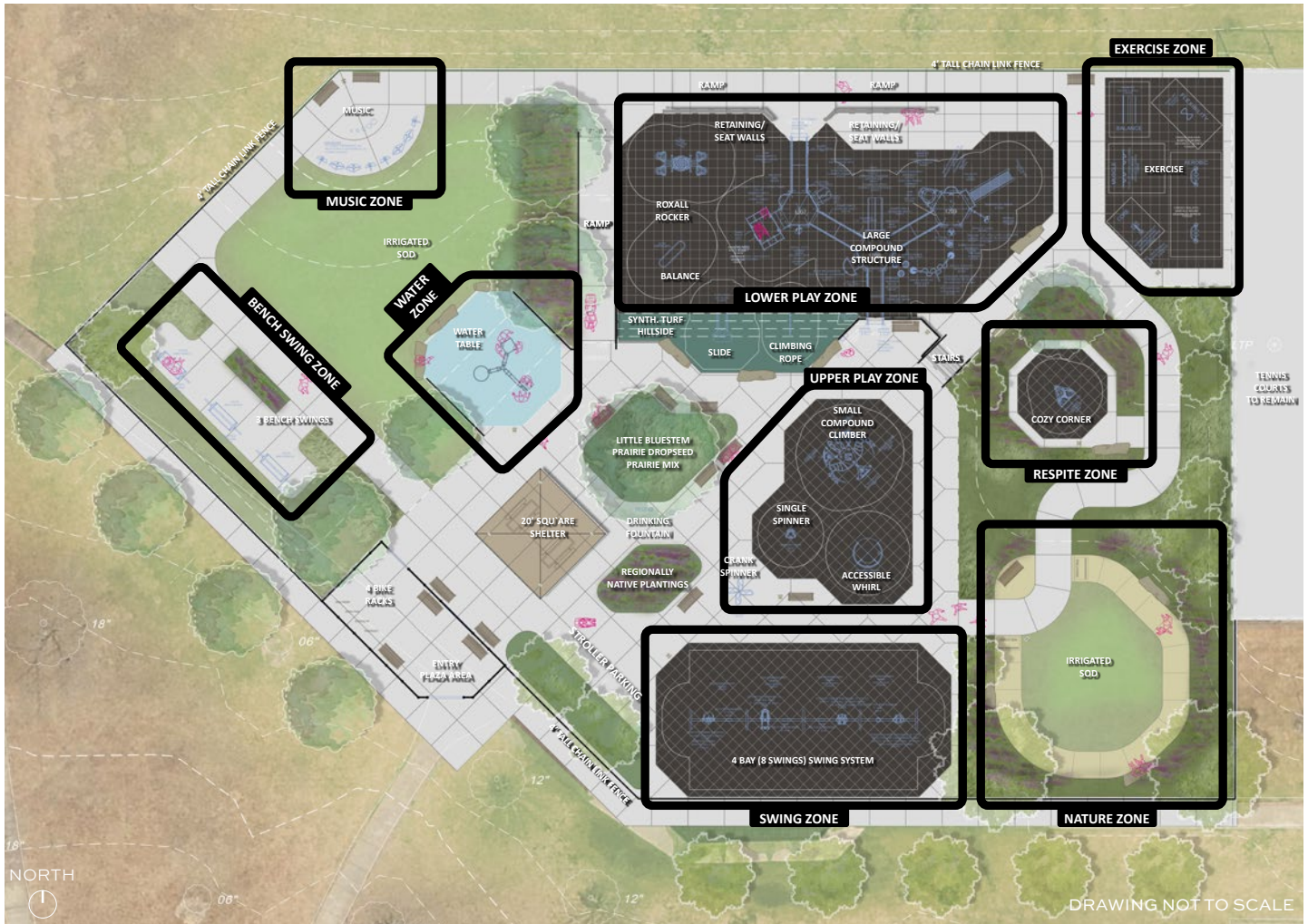
Advocates
\$1,000-5,000

*Support a joint contribution for a smaller
Play Zone or a tribute bench*

Friends
\$250-500

*Support the gateway fence to the play
area by purchasing a picket with option
for 1 or 2 plaques per picket*

PLAYGROUND PLAN WITH ZONES



General organization of space will remain but design is subject to change with evolution of design and construction.

ZONES

1. WATER ZONE - \$25K
2. UPPER PLAY ZONE - \$50K
3. SWING ZONE - \$50K
4. NATURE ZONE - \$25K
5. RESPITE ZONE - \$25K
6. EXERCISE ZONE - \$25K
7. LOWER PLAY ZONE - \$75K
8. MUSIC ZONE - \$25K
9. BENCH SWING ZONE - \$25K

PIECES

1. PICKET PLAQUES - \$250/500
2. BENCHES - \$5K
3. DRINKING FOUNTAIN - \$10K
4. SHELTER - \$50K

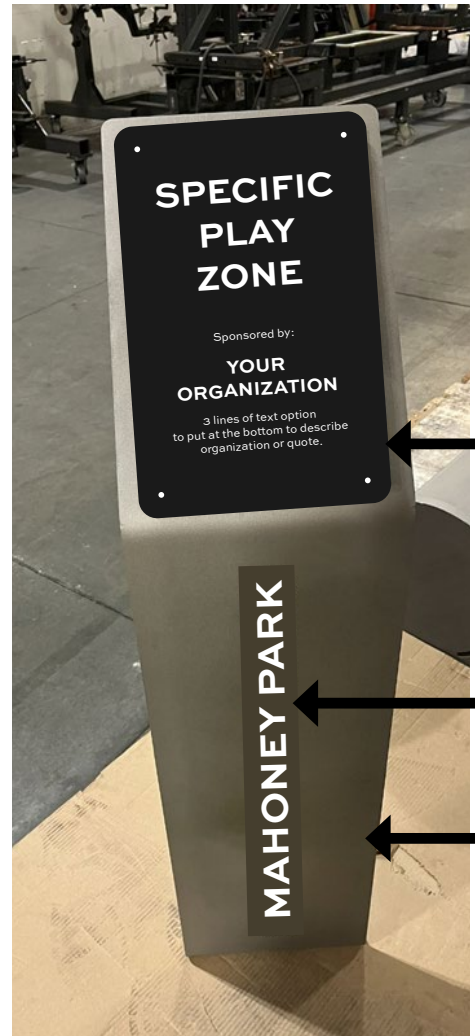
SPECIFIC PLAY ZONE

Championed by:

**Your
Organization**

3 lines of text option
to put at the bottom to describe
organization or quote.

PLAQUE FOR SINGLE ORGANIZATION



EXAMPLE OF PLAQUE MOUNTED
ON METAL PEDESTAL



10" x 16" ETCHED METAL PLAQUE
POWDER COATED IN A OIL RUBBED
BRONZE COLOR

CUT THROUGH OF
MAHONEY PARK TEXT

BROWN POWDER COATED METAL
PEDESTAL

SPECIFIC PLAY ZONE

Advocated by:

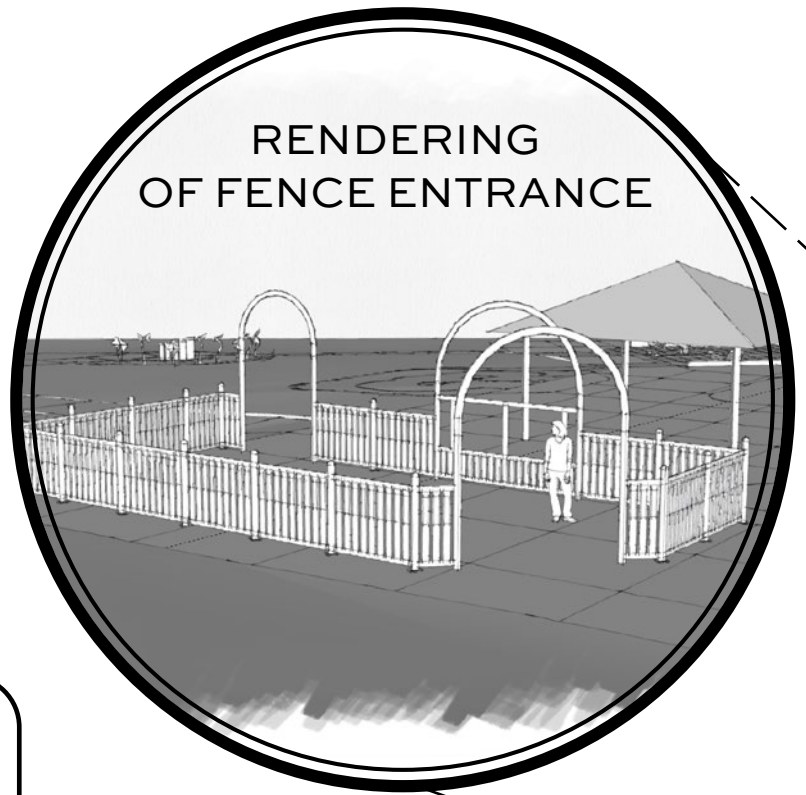
Organization 1
Organization 2
Organization 3
Organization 4
Organization 5

Organization 6
Organization 7
Organization 8
Organization 9
Organization 10

PLAQUE FOR MULTIPLE ORGANIZATIONS/INDIVIDUALS

PICKET PLAQUE

RENDERING OF FENCE ENTRANCE

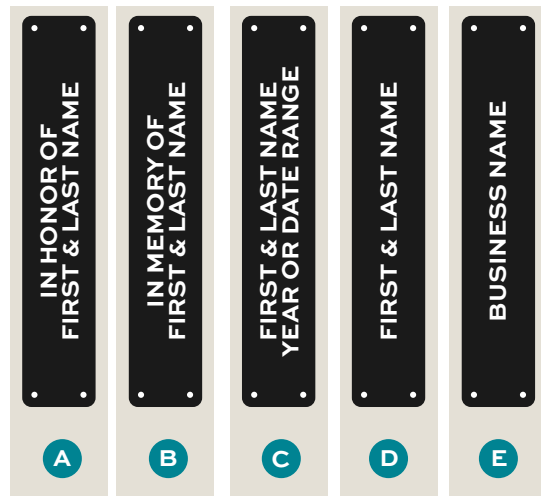


PLAQUE OPTIONS:

Plaques will be displayed vertically at the gateway entrance on a custom made metal plaque. Plaque text examples with option to purchase 1 or 2 plaques shown in 1 or 2 lines of text with a 20 character limit.

1 Picket with plaque = \$250
1 Picket with 2 plaques = \$500

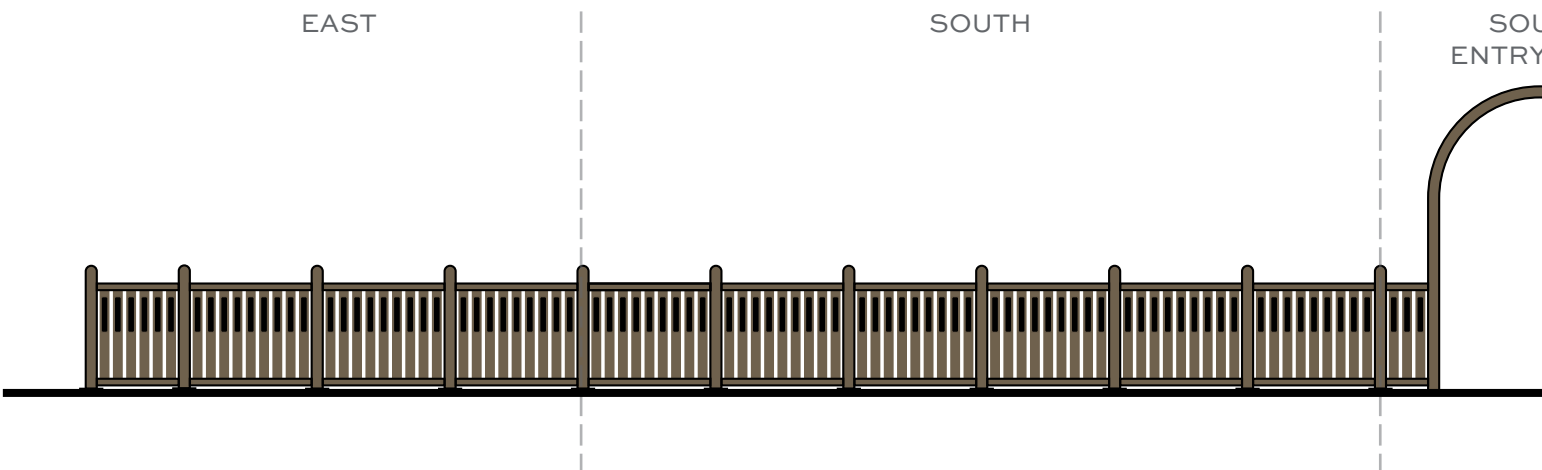
- A** Line 1: In Honor of
Line 2: First and Last Name
- B** Line 1: In Memory of
Line 2: First and Last Name
- C** Line 1: First and Last Name
Line 2: Year or Date Range
- D** Single Line: First and Last Name
- E** Single Line: Business Name



EAST

SOUTH

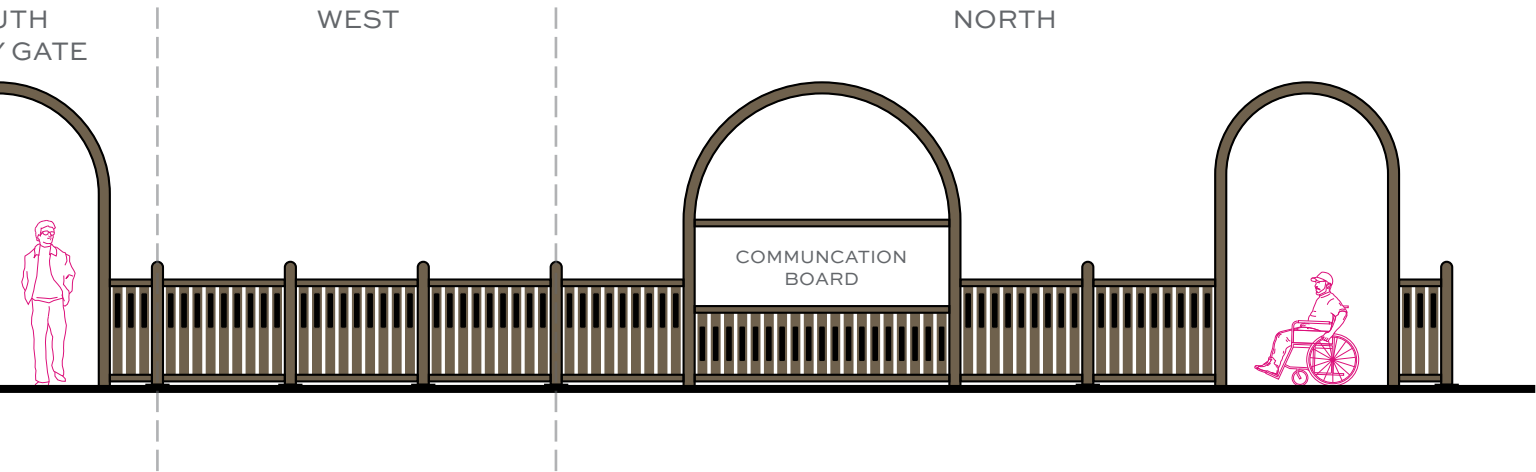
SOU
ENTRY



PLAYGROUND PLAN



General organization of space will remain but design is subject to change with evolution of design and construction.



Mahoney Playground Design Receives Recognition of Excellence

Lincoln Parks and Recreation announced on March 6, 2024 that the design of the inclusive playground scheduled for installation this fall at Mahoney Park, North 70th and Fremont streets, has been designated as a PlayCore National Demonstration Site. PlayCore is a Tennessee-based company that develops leading research and innovative recreation products and services to build healthy communities through play and recreation.

“As we strive for a more inclusive Lincoln, building a play space where everyone is celebrated, not just welcomed, becomes possible. This space allows for joy, friendship, and connections for all,” said Lincoln Parks and Recreation Director Maggie Stuckey-Ross.

Stuckey-Ross said PlayCore recognized Lincoln for its commitment to provide a high-quality outdoor park destination that exemplifies evidence-based best practices in design, offers meaningful experiences, and thoughtfully supports health and wellness in the community. PlayCore cited Mahoney Park as a model project of excellence in the following categories: Outdoor Adult Fitness Parks, 7 Principles of Inclusive Playground Design, and Play On! – Promoting Physical Activity.



In February 2023, the City was awarded Land and Water Conservation Funds in the amount of \$400,000, matched by city and private funds, to construct the Mahoney Park inclusive playground as envisioned in the Outdoor Inclusive Play Strategic Plan.

Inclusive playground design include physical accommodations that provide access and specialized equipment to meet certain needs, as well as provide opportunities for everyone to explore and play with children and adults who may have different levels of ability, said J.J. Yost, Parks and Recreation Assistant Director.

The Mahoney playground was designed by Park Planner Kaylyn Nerverve with input from the Outdoor Inclusive Play working committee to promote physical activity, social interaction, and increase overall well-being among park visitors. The new play area will be within a fenced enclosure and include a pathway loop to access different play zones, open green space, and sensory gardens. The design includes a centralized shade shelter, drinking fountain, interactive water table, and new play equipment to provide accessible and inclusive play experiences such as swinging, sliding, rocking, climbing, balancing, imaginative play, and fitness.

For more information about the Mahoney playground and the National Demonstration Site recognition, visit lincoln.ne.gov/MahoneyPlayground. For more information about the Outdoor Inclusive Play Strategic Plan, visit lincoln.ne.gov/inclusiveplay.