



### The Legacy of Chief Standing Bear

From his birth on the banks of the Niobrara River in Nebraska until his death in 1903, Chief Standing Bear spent his life in a constant struggle to gain equality and justice for our nation's Native Americans. In 1877, the federal government forced Chief Standing Bear and the Ponca Tribe from their homeland to a reservation in Oklahoma. To honor his son's dying wish to be buried in his homeland, Chief Standing Bear attempted to return to Nebraska and was arrested. In a historic 1879 court decision, he was found to be a "person under the law" and freed.

To memorialize this civil rights story, Lincoln native Donald M. Campbell commissioned world-renowned sculptor Benjamin Victor to create a 10-foot bronze statue commemorating the historic 1879 Omaha courtroom scene where Chief Standing Bear so eloquently stated, "I Am a Man." The statue was installed on Nebraska's Centennial Mall in 2017.



**For more about Nebraska's Centennial Mall, contact the Lincoln Parks Foundation: [LincolnParks.org](http://LincolnParks.org) or 402-441-8258**

#### Nearby Places to Visit:

- Nebraska Capitol: <http://capitol.nebraska.gov>
- Nebraska State History Museum: <https://history.nebraska.gov>
- University of Nebraska State Museum at Morrill Hall: <http://museum.unl.edu>
- Dining, shopping and entertainment in Lincoln: <http://www.lincoln.org>
- Downtown Lincoln: <https://downtownlincoln.org>
- Lincoln Haymarket: <https://lincolnhaymarket.org>



## Nebraska's Centennial Mall A Tribute to All Nebraskans

15th and K Streets | Lincoln, Nebraska | [LincolnParks.org](http://LincolnParks.org)

Photo by Ryan Lindbeck, Altitude Motion Media



Photo by Mark Canney

### WELCOME TO NEBRASKA'S CENTENNIAL MALL!

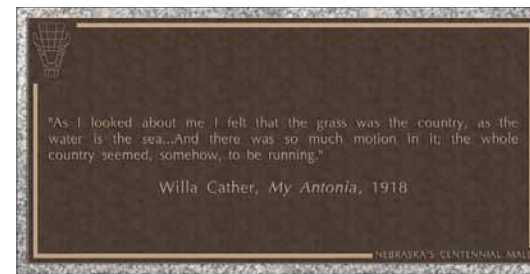
As envisioned by Capitol Architect Bertram Goodhue in 1922, Nebraska's Centennial Mall is the primary grand entrance to the Nebraska Capitol. Dedicated in 1967 during the Nebraska Centennial and renovated in 2016, the seven-block public Mall serves as a scenic connection between the Capitol and the University of Nebraska campus. The Mall provides flexible gathering spaces and opportunities for visitors who want to learn more about the history of Nebraska and a place for future stories to be told.

Nebraska's Centennial Mall is located on 15th Street between K and R Streets in Downtown Lincoln, Nebraska.

### Spirit of Nebraska Pathway

The Spirit of Nebraska Pathway is a series of granite and bronze tiles along the twin walkways of Nebraska's Centennial Mall. The pathway program recognizes people, places, organizations, businesses and events of Nebraska. All members of the Nebraska Hall of Fame are recognized along the Spirit of Nebraska Pathway. The bronze tiles have interactive QR codes which link to a website with photos and stories of those featured: [SpiritofNebraskaPathway.org](http://SpiritofNebraskaPathway.org).

Tiles are available for sponsorship. To find out more, please visit [LincolnParks.org](http://LincolnParks.org) or call the Lincoln Parks Foundation at 402-441-8258.



### Native American Recognition

The significant influence of Native Americans is expressed throughout the Mall's design. A 'light circle' that recognizes 27 tribes associated with Nebraska history, is part of a native landscape garden located north of the fountain between P and Q Streets. Native American words, symbols and design patterns are incorporated into features throughout the Mall. A Pow Wow gathering circle at the north end provides a celebration and gathering space for all Mall visitors, with special appreciation for Native Americans in the Nebraska region.



Photos by Kelsey Moline

### Features along Nebraska's Centennial Mall

- ~ Capitol Fountain depicting the Great Seal of the State of Nebraska
- ~ Missouri River Fountain and Plaza with the State of Nebraska map depicting eco-regions, rivers, the Union Pacific transcontinental railroad route, Chief Standing Bear's Ponca Trail of Tears and county seats
- ~ Innovation to Imagination Fountain and Plaza
- ~ Chief Standing Bear statue
- ~ Native American recognition
- ~ Native American patterns stenciled along band at the crosswalks
- ~ Pathway tiles with stories of Nebraska
- ~ Plaza gathering areas
- ~ Tree-lined vistas of the State Capitol and the University of Nebraska
- ~ Large grassy lawns for events
- ~ Native landscapes
- ~ Sustainable features
- ~ Educational and interpretive features
- ~ Design motifs from the State Capitol



Photo courtesy of Dreamscapes, Inc.

## Capitol Fountain and Plaza

K to L Streets: *We the People*

### FEATURES

- 1 Capitol Fountain and the Great Seal of the State of Nebraska
- 2 Plaza gathering area
- 3 Flexible greenspace for events
- 4 Spirit of Nebraska Pathway
- 5 Limestone planters reflect the north entrance of the Capitol
- 6 Native grasses in the planters
- 7 Agriculture recognition



## Missouri River Fountain and Nebraska Heritage Plaza

L to M Streets: *Our Home Nebraska*

### FEATURES

- 8 Colored pavers represent ecological regions with tallgrass prairie in the east, short grass prairie in the west
- 9 State of Nebraska map shows rivers, county seats, Union Pacific transcontinental railroad route, and Chief Standing Bear's Ponca Tribe Trail
- 10 Sculpture "Wind Spirit" by Sculptor Paul Lindard
- 11 Granite tiles depicting Nebraska's 93 counties border the plaza
- 12 Seating areas on the west side of the block are tributes to the Platte River and Ogallala Aquifer, Nebraska's primary water resources
- 13 Native grasses and wildflowers bordering the plaza
- 14 Native American Recognition:
  - Limestone walls near the State of Nebraska map feature the names of the four current Nebraska tribes (Ponca, Santee Sioux, Winnebago, Omaha).
  - Planter border patterns representative of tribal beadwork patterns.
  - Chief Standing Bear's Ponca Tribe Trail from their home in Nebraska to Oklahoma is symbolically shown on the map with medallions that mark camp locations.
  - Missouri River Fountain: Located on the east side of the plaza, this recognizes Nebraska's eastern border.
  - Spirit of Nebraska Pathway tiles: Pawnee Tribe, Santee Sioux Tribe of Nebraska, Otoe Missouri, Winnebago Tribe of Nebraska, Omaha Tribe of Nebraska, Standing Bear Trail and Osni Ponca.

## Imagination to Innovation Fountain and Plaza

P to Q Streets: *Sparking the Good Life*

### FEATURES

- 15 Imagination to Innovation Fountain and plaza
- 16 Fountain with "jumping jets" of water represent playfulness and creativity
- 17 Prairie landscape at the south end of the block
- 18 Seating areas
- 19 University of Nebraska's Anderson Hall
- 20 Lincoln Children's Museum
- 21 "Standing Bear, Chief of the Ponca" portrait sculpture by Benjamin Victor
- 22 Native American Recognition:
  - Spirit of Nebraska Pathway tiles: Chief Standing Bear and Susette La Flesche Tibbles.
  - Limestone seating blocks north of fountain represent children's building blocks and are engraved with letters from the alphabet and symbols from Native American tribes (deer, spirit, wind, sky, star, and buffalo, rain cloud and sky).
  - Limestone-tiered walls north of the fountain are engraved with words formed from the letters and symbols seen on the seating blocks.
  - Light Circle: A 'light circle' recognizes the 27 Native American tribes with Nebraska ties. This area includes plants used in traditional native life for paints, medicines, healing and everyday use.



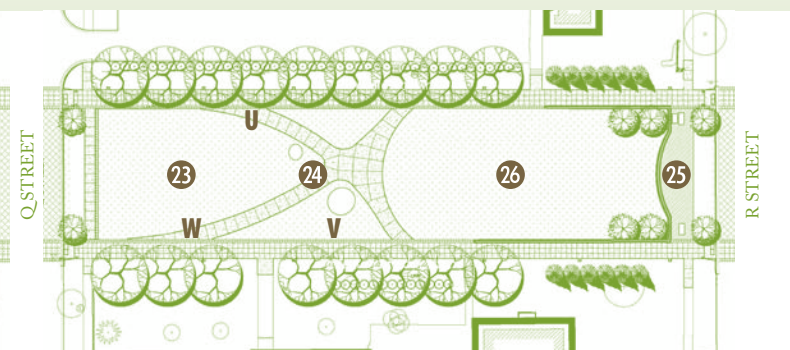
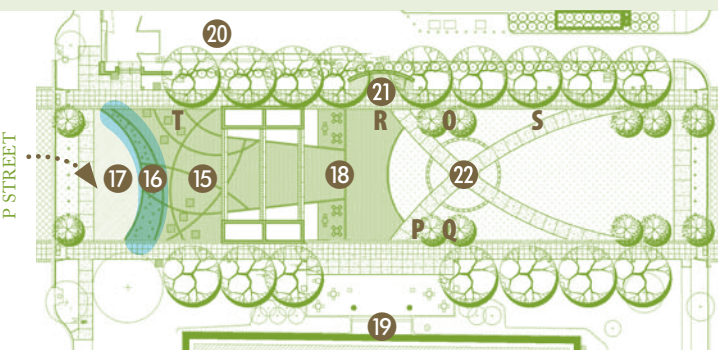
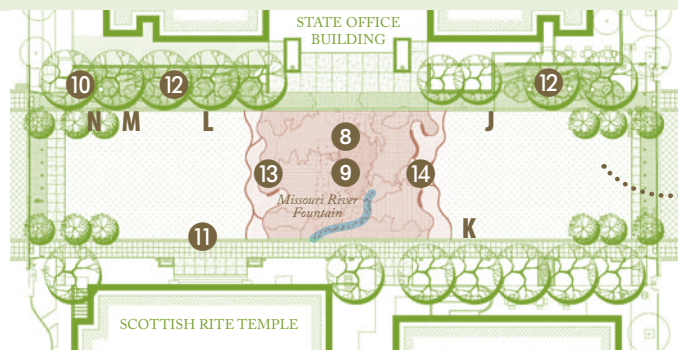
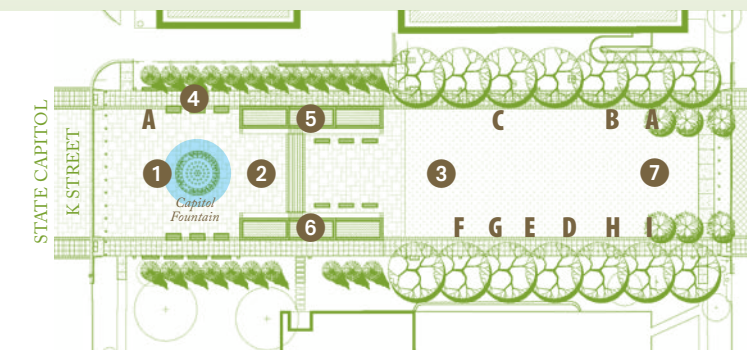
Photo by Mark Canney

## Imagination to Innovation Fountain and Plaza

Q to R Streets: *Sparking the Good Life*

### FEATURES

- 23 Flexible greenspace
- 24 Tem and Pth sculptures by Jene Highstein
- 25 Reflection Plaza featuring the evolution of the Mall
  - Interpretive panels tell the story of the Capitol City, the State Capitol and Nebraska's Centennial Mall.
- 26 Native American recognition:
  - Grandfather Rocks: Tem and Pth art sculptures by Jane Highstein are symbolic of Lincoln's "Grandfather Rocks" which hold/represent the history of Lincoln.
  - Gathering Circle: A 70' diameter circular gathering area is available for pow wows, performance arts, bands and events. North of the circle, a grassy natural amphitheater provides seating.



### Spirit of Nebraska Pathway Notable Tiles:

- |                                    |                             |
|------------------------------------|-----------------------------|
| <b>A</b> President Abraham Lincoln | <b>F</b> George Norris      |
| <b>B</b> William Jennings Bryan    | <b>G</b> Gilbert Hitchcock  |
| <b>C</b> Red Cloud                 | <b>H</b> J. Sterling Morton |
| <b>D</b> Grace Abbott              | <b>I</b> John J. Pershing   |
| <b>E</b> Glenn Korff               |                             |

### Spirit of Nebraska Pathway Notable Tiles:

- J** Ogallala Aquifer
- K** Platte River
- L** Union Pacific
- M** Chimney Rock
- N** Loren Eiseley

### M to P Streets: Community Mosaic of Nebraskans

*Celebration of social and commerce activities*

### FEATURES

- Vibrant urban environment
- Festival space
- Tree-lined vista to the Capitol
- Rain gardens at intersections
- Nebraska History Museum

### Spirit of Nebraska Pathway Notable Tiles:

Feature individuals, businesses and organizations who have contributed to the success of the State in everyday life.

### Spirit of Nebraska Pathway Notable Tiles:

- O** Bess Streeter Aldrich
- P** Willa Cather
- Q** John G. Neihardt
- R** Chief Standing Bear
- S** Susette La Flesche Tibbles
- T** Glenn Korff

### Spirit of Nebraska Pathway Notable Tiles:

- U** Charles Bessey
- V** Nathan Roscoe Pound
- W** Hartley Burr Alexander